

# 801 GERVAIS STREET

Suite B

Columbia, South Carolina 29201

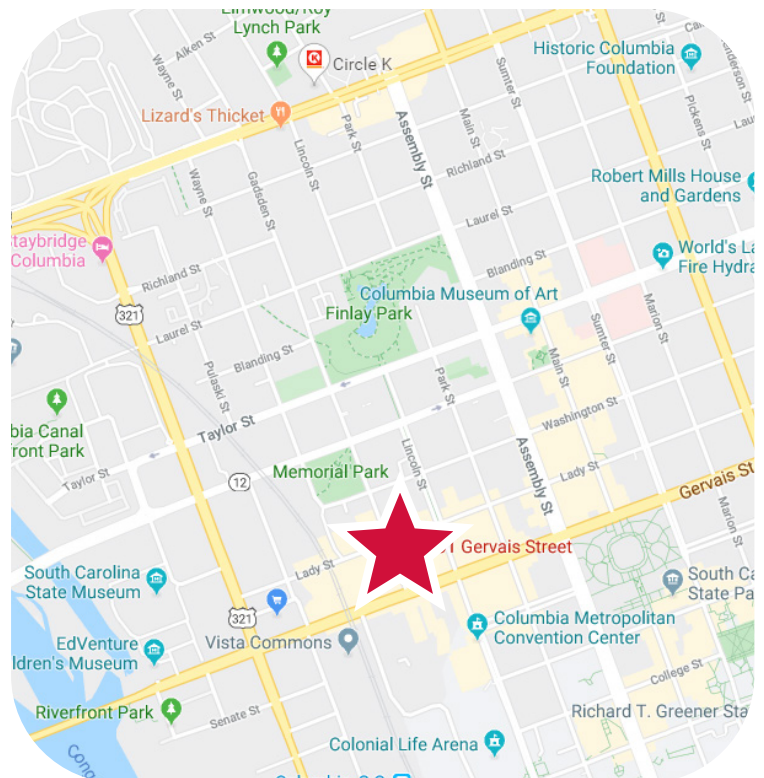
Vista Arts & Entertainment District



LEASE RATE: \$19.00 PSF FS

## Office Space For Lease in the Vista

- ±3,400 SF of Office Space Available For Lease
- Upgraded, modern finishes
- Exceptional location in the heart of Vista, near Columbia's best amenities, top employers, the State Capitol, and the University of South Carolina
- On-site Parking: 3.33/1,000 SF
- Features: Seven (7) Offices, Reception, Conference Room, Common Area, Three (3) Restrooms, and Break Room
- Excellent walkability



1111 Laurel Street, Columbia, SC 29201 T 803.779.8600 [www.wilsonkibler.com](http://www.wilsonkibler.com)

Drew Kirkpatrick  
803.255.8615 [dkirkpatrick@wilsonkibler.com](mailto:dkirkpatrick@wilsonkibler.com)

The information contained herein has been obtained from sources we believe to be reliable; however, Wilson Kibler has not conducted any investigation regarding these matters and makes no warranty or representation whatsoever regarding the accuracy or completeness of the information provided. Independently owned and operated.

# 801 GERVAIS STREET

Suite B

Columbia, South Carolina 29201

*Vista Arts & Entertainment District*



**Wilson Kibler**  
COMMERCIAL REAL ESTATE

## Interior Pictures



1111 Laurel Street, Columbia, SC 29201 T 803.779.8600 [www.wilsonkibler.com](http://www.wilsonkibler.com)

Drew Kirkpatrick  
803.255.8615 [dkirkpatrick@wilsonkibler.com](mailto:dkirkpatrick@wilsonkibler.com)

The information contained herein has been obtained from sources we believe to be reliable; however, Wilson Kibler has not conducted any investigation regarding these matters and makes no warranty or representation whatsoever regarding the accuracy or completeness of the information provided. Independently owned and operated.

# 801 GERVAIS STREET

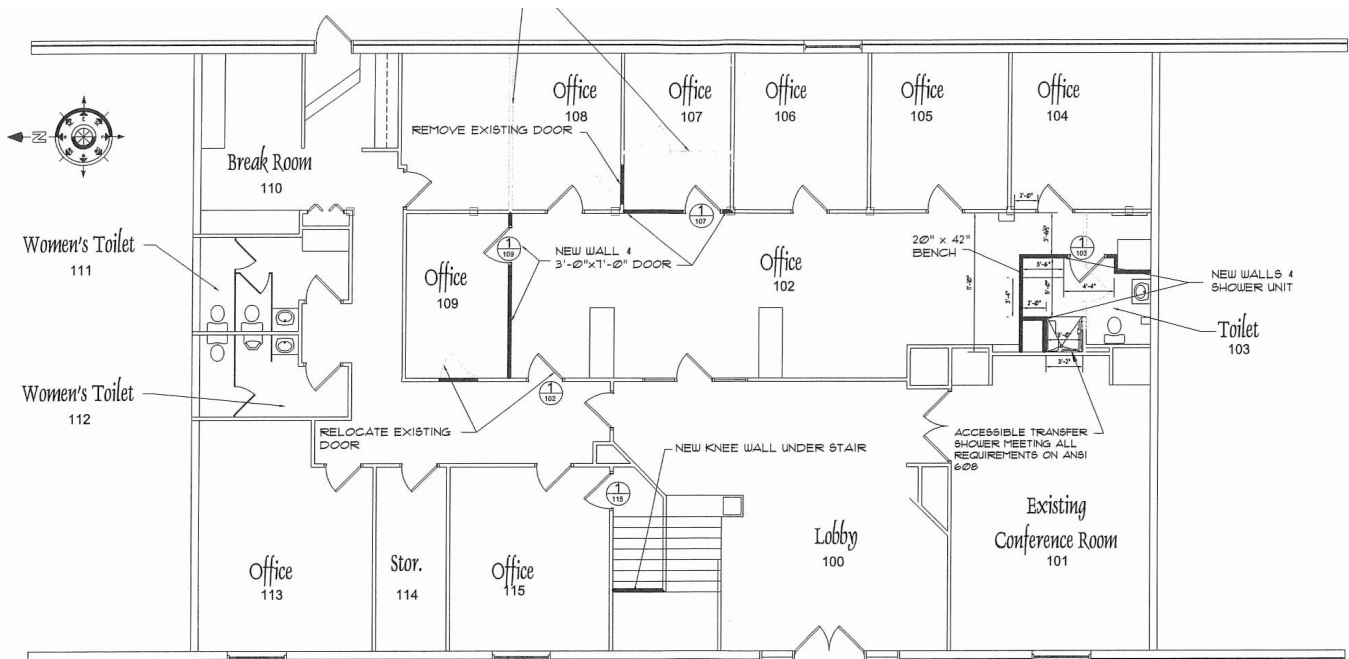
Suite B  
Columbia, South Carolina 29201  
Vista Arts & Entertainment District



## Nearby Points of Interest



## Floor Plan



1111 Laurel Street, Columbia, SC 29201 T 803.779.8600 [www.wilsonkibler.com](http://www.wilsonkibler.com)

Drew Kirkpatrick  
803.255.8615 [dkirkpatrick@wilsonkibler.com](mailto:dkirkpatrick@wilsonkibler.com)

The information contained herein has been obtained from sources we believe to be reliable; however, Wilson Kibler has not conducted any investigation regarding these matters and makes no warranty or representation whatsoever regarding the accuracy or completeness of the information provided. Independently owned and operated.

# 801 GERVAIS STREET

Suite B

Columbia, South Carolina 29201

Vista Arts & Entertainment District



**Wilson Kibler**  
COMMERCIAL REAL ESTATE

## The Vista Commercial District

The Vista is Columbia's Arts, Entertainment, and Convention District. Once a bustling cotton warehouse district and commercial railroad terminal, the Vista area of downtown Columbia had declined severely in the late 1970s. Today the Vista has been rejuvenated with over 45 restaurants and bars, more than 60 art galleries and specialty shops, six hotels, and two museums. The Publix Market, located in the historic South Carolina Dispensary warehouse, has created a new style of urban residential development previously unavailable in Columbia. REcent tenants in the Vista include: Old Chicago Pizza, Hickory Tavern, Grill Marks, Tin Lizzy's Cantina, Urban Outfitters, and Newk's.

## Area Retailers



1111 Laurel Street, Columbia, SC 29201 T 803.779.8600 [www.wilsonkibler.com](http://www.wilsonkibler.com)

Drew Kirkpatrick  
803.255.8615 [dkirkpatrick@wilsonkibler.com](mailto:dkirkpatrick@wilsonkibler.com)

The information contained herein has been obtained from sources we believe to be reliable; however, Wilson Kibler has not conducted any investigation regarding these matters and makes no warranty or representation whatsoever regarding the accuracy or completeness of the information provided. Independently owned and operated.